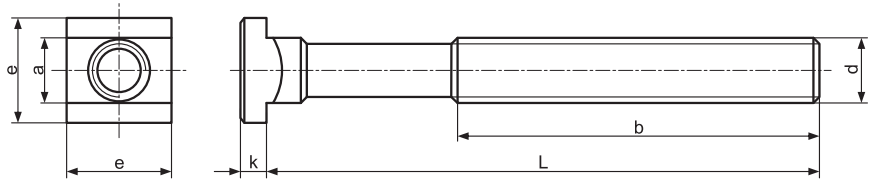


Śruba do rowków teowych - RLS Bolt for T-slots - RLS

Material/Material: 1.7225, kształtowany na gorąco, frezowany, gwint walcowany / forged, T-slot milled, rolled thread

Norma/Standard: DIN 787

Klasa/Class: 10.9



Dostarczana w komplecie z nakrętką i podkładką / Supplied together with nut and washer

Nr katalogowy Item no.	d x a	L	b	a	e	k	Ciężar (kg) Weight	Nr katalogowy Item no.	d x a	L	b	a	e	k	Ciężar (kg) Weight
RLS-1010040	M10x10	40	30	9,7	15	6	0,065	RLS-2020080	M20X20	80	55	19,7	32	12	0,52
RLS-1010063		63	45				0,08	RLS-2020100		100	65				0,56
RLS-1010080		80	50				0,09	RLS-2020125		125	85				0,57
RLS-1010100		100	60				0,11	RLS-2020160		160	110				0,68
RLS-1012050		50	35				0,10	RLS-2020200		200	125				0,71
RLS-1012063	M10x12	63	40	11,7	18	7	0,12	RLS-2020250	M20X22	250	160	21,7	35	14	0,80
RLS-1012080		80	55				0,13	RLS-2020315		315	190				1,03
RLS-1012100		100	60				0,15	RLS-2022080		80	55				0,53
RLS-1012125		125	75				0,175	RLS-2022100		100	65				0,61
RLS-1012160		160	90				0,225	RLS-2022125		125	85				0,67
RLS-1012200	200	120	0,27	RLS-2022160	160	110	0,71								
RLS-1212050	M12X12	50	35	11,7	18	7	0,12	RLS-2022200	M22X24	200	125	23,7	40	16	0,72
RLS-1212063		63	40				0,128	RLS-2022250		250	150				0,89
RLS-1212080		80	55				0,13	RLS-2022315		315	190				1,05
RLS-1212100		100	65				0,145	RLS-2224080		80	55				0,90
RLS-1212125		125	75				0,17	RLS-2224100		100	65				0,96
RLS-1212160	160	100	0,195	RLS-2224125	125	85	1,20								
RLS-1212200	200	120	0,22	RLS-2224160	160	110	1,25								
RLS-1214050	M12x14	50	35	13,7	22	8	0,13	RLS-2224200	M24x24	200	125	23,7	40	16	1,40
RLS-1214063		63	45				0,145	RLS-2224250		250	150				1,60
RLS-1214080		80	55				0,155	RLS-2224315		315	190				1,70
RLS-1214100		100	65				0,165	RLS-2424100		100	70				0,91
RLS-1214125		125	75				0,18	RLS-2424125		125	85				0,97
RLS-1214160	160	100	0,21	RLS-2424160	160	110	1,04								
RLS-1214200	200	120	0,24	RLS-2424200	200	125	1,265								
RLS-1416063	M14X16	63	45	15,7	25	9	0,20	RLS-2424250	M24x28	250	150	27,7	44	18	1,41
RLS-1416080		80	55				0,22	RLS-2424315		315	190				1,64
RLS-1416100		100	65				0,23	RLS-2424400		400	240				1,78
RLS-1416125		125	75				0,28	RLS-2428100		100	70				0,98
RLS-1416160		160	100				0,31	RLS-2428125		125	85				1,01
RLS-1416200	200	120	0,35	RLS-2428160	160	110	1,15								
RLS-1416250	250	150	0,40	RLS-2428200	200	125	1,24								
RLS-1616063	M16X16	63	45	15,7	25	9	0,25	RLS-2428250	M30x36	250	150	35,6	54	22	1,50
RLS-1616080		80	55				0,275	RLS-2428315		315	190				1,73
RLS-1616100		100	65				0,29	RLS-2428400		400	240				1,86
RLS-1616125		125	85				0,30	RLS-2428500		500	290				2,31
RLS-1616160		160	100				0,42	RLS-3036125		125	80				1,86
RLS-1616200	200	125	0,435	RLS-3036160	160	110	1,95								
RLS-1616250	250	150	0,53	RLS-3036200	200	135	2,23								
RLS-1618063	M16X18	63	45	17,7	28	10	0,26	RLS-3036250	M36x42	250	150	41,6	65	26	2,55
RLS-1618080		80	55				0,305	RLS-3036315		315	200				2,95
RLS-1618100		100	65				0,315	RLS-3036500		500	300				3,95
RLS-1618125		125	85				0,36	RLS-3642160		160	100				3,22
RLS-1618160		160	100				0,39	RLS-3642250		250	175				3,84
RLS-1618200	200	125	0,448	RLS-3642400	400	250	4,95								
RLS-1618250	250	150	0,56	RLS-3642600	600	340	6,50								
RLS-1820080	M18X20	80	55	19,7	32	12	0,42	RLS-4248160	M42X48	160	100	47,6	75	30	6,00
RLS-1820100		100	65				0,46	RLS-4248250		250	175				6,90
RLS-1820125		125	85				0,49	RLS-4248400		400	250				8,10
RLS-1820160		160	110				0,58								
RLS-1820200		200	125				0,61								
RLS-1820250	250	150	0,70												
RLS-1820315	315	190	0,93												