

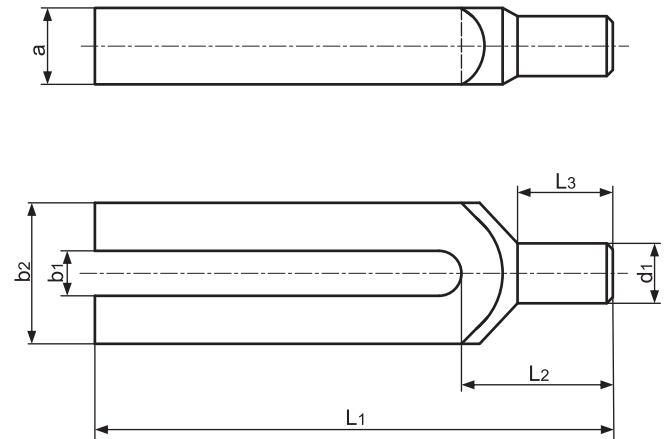
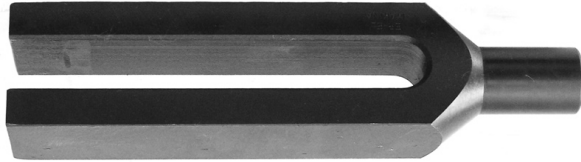
Łapa dociskowa widlasta z czopem - RLG

Forked clamp with pin end - RLG

Material/Material: 1.1191, 32-35HRC

Norma/Standard: DIN 6315C

Uwagi/Remarks: Śruby teowe, podkładki i nakrętki należy zamówić osobno / T-screws, washers and nuts must be ordered separately



| d ₁ | a | L ₂ | L ₃ | b ₂ | b ₁ | Śruba teowa T-slot bolt | L ₁ | Ciężar (kg) Weight | Nr katalogowy Item no. |
|----------------|----|----------------|----------------|----------------|----------------|----------------------------|----------------|-----------------------|---------------------------|
| 12 | 15 | 30 | 18 | 30 | 9 | M8 | 100 | 0,220 | RLG-08100 |
| 16 | 20 | 36 | 24 | | 11 | M10 | 125 | 0,350 | RLG-10125 |
| 20 | 25 | 45 | 30 | 40 | 14,5 | M12- M14 | 160 | 0,770 | RLG-12160 |
| | | | | | | | 200 | 0,980 | RLG-12200 |
| 24 | 30 | 55 | 36 | 50 | 18,5 | M16- M18 | 200 | 1,450 | RLG-16200 |
| | | | | | | | 250 | 1,750 | RLG-16250 |
| 30 | 40 | 65 | 45 | 60 | 22,5 | M20- M22 | 250 | 2,750 | RLG-20250 |
| | | | | | | | 315 | 3,450 | RLG-20315 |
| 38 | 40 | 80 | 56 | 70 | 26 | M24 | 250 | 3,200 | RLG-24250 |
| | | | | | | | 315 | 4,100 | RLG-24315 |
| 45 | 50 | 85 | 56 | 80 | 34 | M30 | 315 | 5,700 | RLG-30315 |
| | | | | | | | 400 | 7,000 | RLG-30400 |

