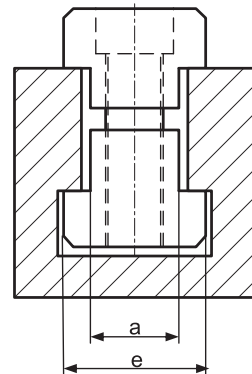
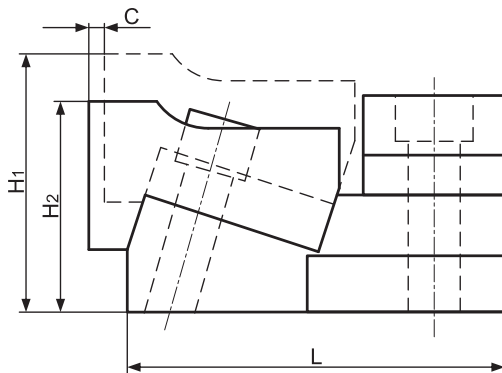
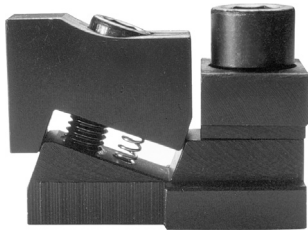


Docisk boczny do rowków teowych - RLA

Side clamp - RLA

Material/Material: 1.1191, 35-38HRC



| d | a | e | H ₁ | H ₂ | L | C | Ciężar (kg) Weight | Nr katalogowy Item no. | Siła mocowania (daN) Clamping force |
|------------|------|----|----------------|----------------|----|---|-----------------------|---------------------------|--|
| M10 | 11,5 | 18 | 32 | 21 | 46 | 3 | 0,12 | RLA-10 | 500 |
| M12 | 13,5 | 22 | 38 | 25 | 51 | | 0,20 | RLA-12 | 500 |
| M14 | 15,5 | 25 | 42 | 28 | 61 | 4 | 0,29 | RLA-14 | 550 |
| M16 | 17,5 | 28 | 50 | 34 | 67 | | 0,44 | RLA-16 | 800 |
| M18 | 19,5 | 32 | 55 | 37 | 78 | 5 | 0,65 | RLA-18 | 900 |
| M20 | 21,5 | 35 | 60 | 38 | 87 | | 0,84 | RLA-20 | 1200 |