

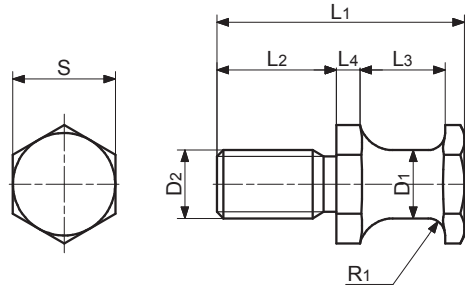
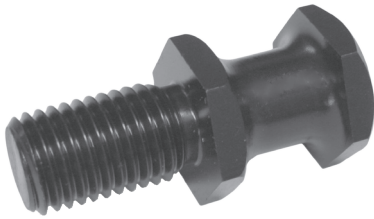
Czop transportowy wkręcany - LST

Lifting pin - LST



Material/Material: 1.1191

Wytrzymałość: 700÷800 N/mm²
Tensile strength:



Udźwig (kg) Capacity (kg)	L ₁	L ₂	L ₃	L ₄	D ₁	D ₂	S	Nr katalogowy Item no.
320	50	22	16	6	16	M16	27	LST-16
500	60	25	20	7,5	20	M20	32	LST-20
1000	78	32	25	10,5	25	M24	36	LST-24
1500	95	40	32	11,5	32	M30	41	LST-30
2500	118	50	40	14	40	M36	50	LST-36