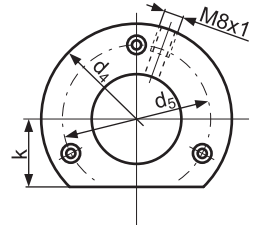
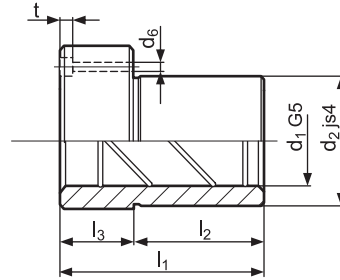
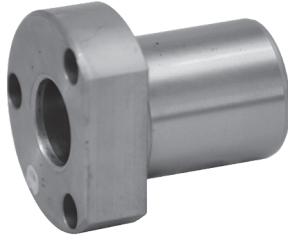


## Tuleja prowadząca, stalowa - TSK

### Steel guide bush - TSK

Material/Material: 1.7131  
 Twardość/Hardness: 60±2 HRC  
 Norma/Standard: ISO 9448-5

Max. szybkość pracy/Max. speed: 20 m/min



Rekomendowana dokładność gniazda - d<sub>2</sub> (H5)  
 Recommended precision of the socket - d<sub>2</sub> (H5)

t	k	d <sub>2</sub>	d <sub>4</sub>	d <sub>5</sub>	d <sub>6</sub>	l <sub>3</sub>	l <sub>2</sub>	l <sub>1</sub>	d <sub>1</sub>	Nr katalogowy Item no.	d <sub>1</sub>	Nr katalogowy Item no.
4,6	18	32	50	40	4,5	15	23	<b>38</b>	20	TSK-20038	19	TSK-19038
						15	30	<b>45</b>		TSK-20045		TSK-19045
						15	37	<b>52</b>		TSK-20052		TSK-19052
5,7	23	40	63	50	5,5	15	23	<b>38</b>	25	TSK-25038	24	TSK-24038
						25	30	<b>55</b>		TSK-25055		TSK-24055
						25	37	<b>62</b>		TSK-25062		TSK-24062
5,7	28	48	72	58	5,5	15	30	<b>45</b>	32	TSK-32045	30	TSK-30045
						25	37	<b>62</b>		TSK-32062		TSK-30062
						25	47	<b>72</b>		TSK-32072		TSK-30072
6,8	33	58	85	70	6,6	25	30	<b>55</b>	40	TSK-40055	38	TSK-38055
						30	37	<b>67</b>		TSK-40067		TSK-38067
						30	47	<b>77</b>		TSK-40077		TSK-38077
9	38	70	104	86	9	25	37	<b>62</b>	50	TSK-50062	48	TSK-48062
						42	47	<b>89</b>		TSK-50089		TSK-48089
						42	60	<b>102</b>		TSK-50102		TSK-48102
9	46	85	120	100	9	42	47	<b>89</b>	63	TSK-63089	60	TSK-60089
						42	60	<b>102</b>		TSK-63102		TSK-60102
11	56	105	148	125	11	50	75	<b>125</b>	80	TSK-80125	-	-