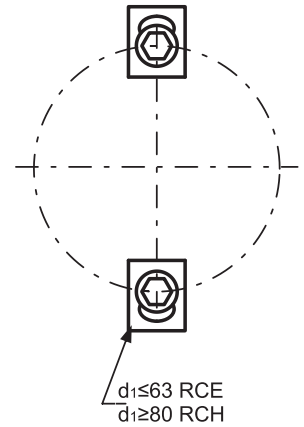
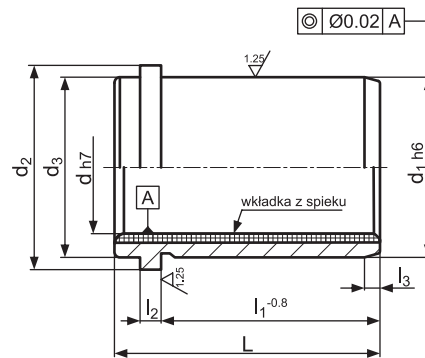


Tuleja prowadząca z wkładką ze spieków - BFD

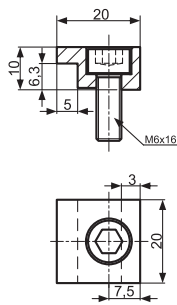
Guide bush with sintered ferrite insert - BFD

Material/Material: 1.0503 + spiek ferrytowy / sintered ferrite
 Twardość/Hardness: 60±2 HRC
 Norma/Standard: ISO 9448-6

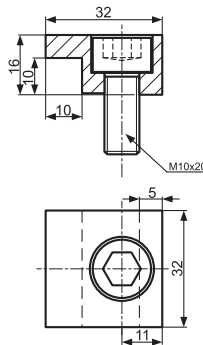
Max. szybkość pracy/Max. speed: 70 m/min



Zaczepek/Clamp RCE



Zaczepek/Clamp RCH



Uwaga: Zaczepek zamawiać oddzielnie
 Remark: Clamps must be ordered separately

Rekomendowana dokładność gniazda - d₂ (H7)
 Recommended precision of the socket - d₂ (H7)

d ₁	d ₂	d ₃	l ₁	l ₂	l ₃	L	d	Nr katalogowy Item no.	d	Nr katalogowy Item no.
32	40	32	32	6,3	4	40	24	BFD-024040	25	BFD-025040
40	50	40	40	6,3	4	50	30	BFD-030050	32	BFD-032050
50	63	50	50	6,3	5	63	38	BFD-038063	40	BFD-040063
63	71	63	56	6,3	6,3	71	48	BFD-048071	50	BFD-050071
80	90	80	63	10	8	80	60	BFD-060080	63	BFD-063080
100	112	100	80	10	10	100	80	BFD-080100	-	-
125	140	125	106	10	12,5	125	100	BFD-100125	-	-
160	180	160	132	10	16	160	125	BFD-125160	-	-
200	220	200	170	10	16	200	160	BFD-160200	-	-